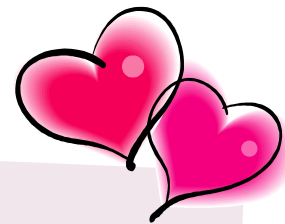


# Logan Rogersville Upper Elementary February Newsletter



## CALENDAR

- Feb 1.... Character Ed Assembly "Courtesy"
- Feb 3... Progress Reports
- Feb 9.... PTA General Meeting 6:30 p.m. @ Upper Elem.
- Feb 11... Kiwanis "Sweetheart Pancake Breakfast" @ Upper 7am-11am
- Feb 14... Valentine Parties @ 2:40
- Feb 15... Spelling Bees for 4th, 5th and 6th grades
- Feb 16... Spring Pictures
- Feb 16... School Board Meeting @ Central Office 7 p.m.
- Feb 17... Half Day Dismissal—12:55
- Feb 20... Presidents' Day—NO SCHOOL

### Spelling Bees

Wednesday, February 15th

4th Grade 9:15am

5th Grade 10:30am

6th Grade 2:45pm

**Look for  
Yearbook  
Sales Info  
coming  
soon!**

Looking Ahead to March...

- March 1..... Character Ed Assembly
- March 2..... Yearbook Sales Deadline
- March 8..... 4th Grade Music Program
- March 12-16... Spring Break



### Sweetheart Pancake Breakfast

Come have breakfast at the Upper Elementary on February 11th, 7am-11am. \$5 for adults and \$3 for children 10 and under. **All Proceeds to Benefit the Rogersville School District Nurse's Program** (PAW Pack Program, School Supplies, Clothing, Shelter and much more for Rogersville students!)

### Valentine's Parties

Parties begin at 2:40pm on February 14th. Please refrain from sending balloons or flowers to your child on this day. Those items are not allowed on buses as they present a safety concern. Thank You!

### Trackin' Wildcats

Congratulations to the students who have walked and jogged 10 miles or more in the early morning Walk/Jog Club. Way to go Wildcats! It's not too late to join. We meet Tuesday and Thursday mornings at 7:45 on the track. Parents, you are more than welcome to join your children.



# **DON'T MISS YOUR CHANCE TO HELP OUR SCHOOLS!**

In lieu of the Gala, the LR Educational Foundation is promoting its one and only fundraiser for this school year. All proceeds from this raffle will go directly back to our schools. If you can't picture yourself in this Camaro, you can trade it back for something else or sell back for cash value. You have until February 7th at half-time of the H.S. Varsity Boys Basketball game, when the winner will be drawn. Tickets may be picked up at any school office, during H.S. boys basketball games or go to [www.logrog.net](http://www.logrog.net) and click on the link to LREF.

2011 LREF FUNDRAISING SWEEPSTAKES

YOUR TICKET.  
YOUR CHANCE.  
OUR THANKS.



2012  
CHEVROLET  
CAMARO



LOGAN  
ROGERSVILLE  
EDUCATIONAL  
FOUNDATION

*With the 2011 Logan Rogersville Educational Foundation Sweepstakes, a little luck can go a long way. That's because for \$40 you'll get a chance to win a 2012 Chevrolet Camaro. But best of all, part of your ticket proceeds will go toward the school organization of your choice.*

## GRAND PRIZE DRAWING

2011 LREF SWEEPSTAKES GRAND PRIZE  
1 IN 1000 ODDS

### YOUR DONATION HELPS SPONSOR

LREF Encouragement Fund	LR Swimming Fund
Alumni Scholarship Fund	Marching and Jazz Band Fund
Booster Club Fund	2012 Project Graduation
CATS Program Fund	PTA Fund



LOGAN  
ROGERSVILLE  
EDUCATIONAL  
FOUNDATION

### LREF MISSION

*To promote educational excellence in the Logan Rogersville School System and community by generating financial resources from private funds to provide support for students, faculty and organizations.*

# YOUR DONATION CAN WIN.

*Grand Prize Drawing will be held on:  
**February 7, 2012**  
at the Logan Rogersville vs. Reeds Spring  
High School Basketball Game  
during the half-time of the Varsity game.*

THANK YOU  
TO OUR  
SPONSORS



Citizens Bank  
of Rogersville



STATE FARM INSURANCE  
-CHUCK MEDLEY  
RELIABLE CHEVROLET

FOR MORE INFO VISIT [WWW.LREFFOUNDATION.ORG](http://WWW.LREFFOUNDATION.ORG)